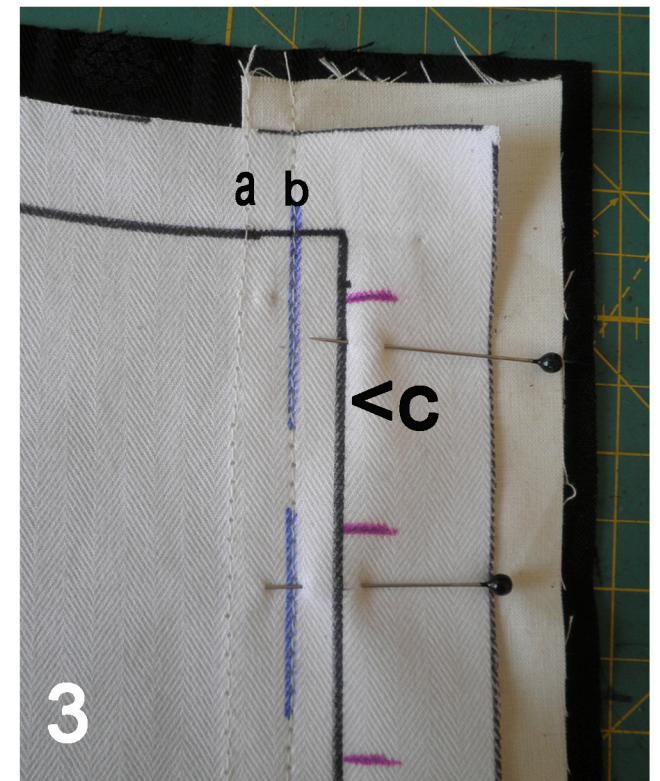
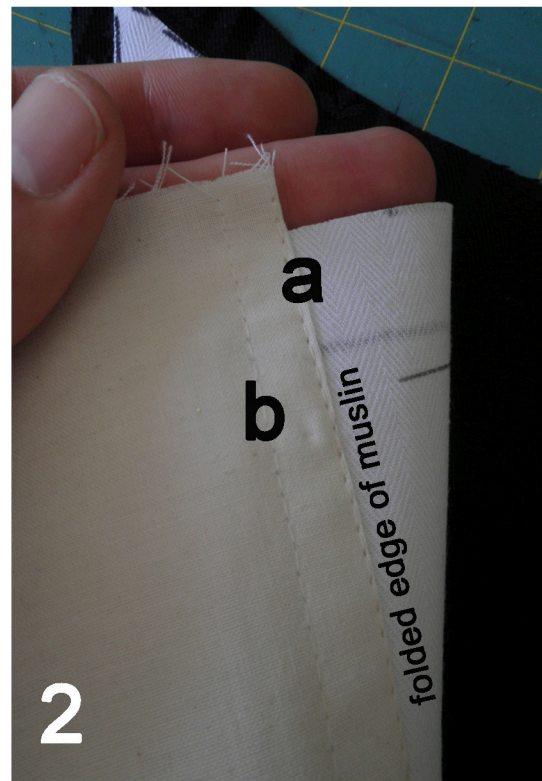
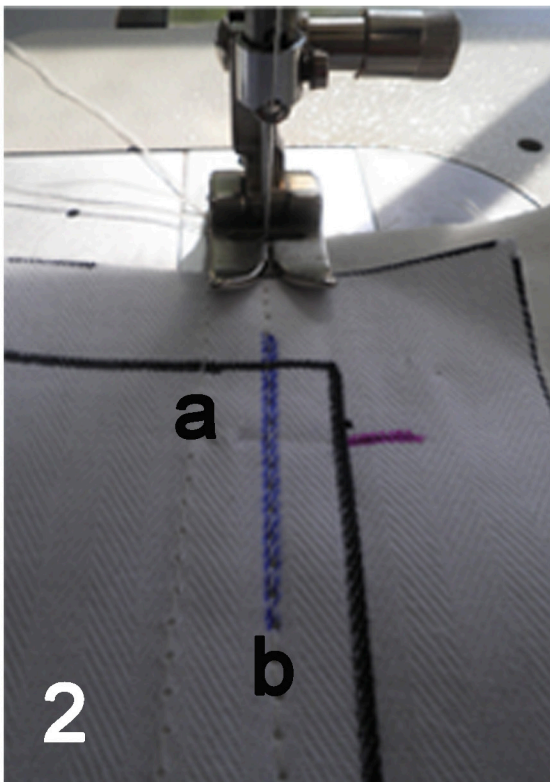
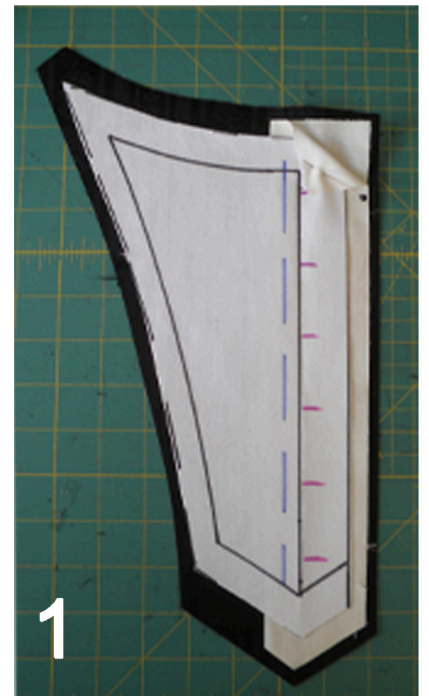


Boning the center back of a bodice.

Easily add a bone to the hook side of a bodice center back & add support behind hooks.

Instructions brought to you by Travis Halsey and Carole Klinko.

1. Between your coutil and fashion fabrics insert a folded piece of muslin 3/4" to 1" beyond the left of your center back line. (hook side of bodice)
2. To the coutil only, stitch the muslin on the edge of the fold (a) and (b) 3/8" to the left of the center back line.
3. Flat-line through all layers on center back line. (c)





4. Trim away the layer of muslin closest to the coustil, leaving about 1/8".
5. Flat-line entire piece. Stitch longest edges first, and always stitch edge to edge. If you stitch in one lap around the perimeter you will create a slight bubble. Be sure to skip over the top of the bone casing where you will insert bone (d).
6. Insert bone between the coustil and the 2 layers of muslin.
7. Close top of bone casing.
8. Serge vertical seams. There is no need to serge the top and bottom of the piece as they will be finished later.

