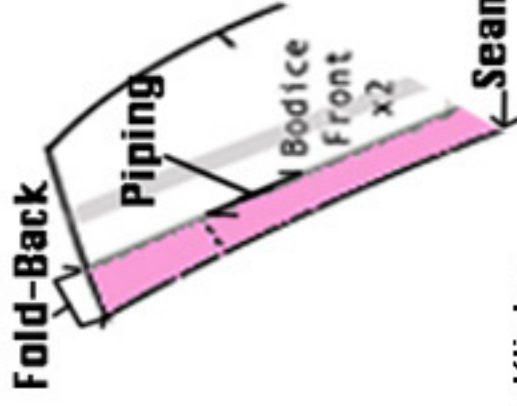
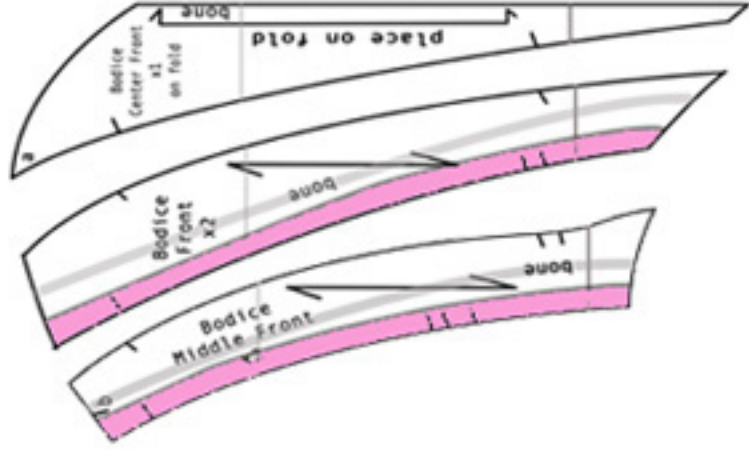


Add Details to a Bodice using Decorative Fold-Backs.

Creating the illusion of a more complex bodice.



1. Measure the distance to the inside of each pattern piece you would like to add a fold-back to and draw a line. (inside of piece)
2. Stitch the line through the fashion and coult using a basting stitch.
3. Cut away excess fashion fabric to the outside of the basted line.
4. Pipe the basted line.



5. With right sides together stitch your fold-back fabric next to the piping.

6. Trim away any excess fabric from the piping underneath your fold-back.

7. PRESS (whenever possible use STEAM)!

8. Stitch seam-line through all layers.

9. Serge outermost edge of seam with fold-back.



***For any piping or fold-back ALWAYS cut your fabrics on the BIAS.**

How wide to cut your fold-back bias - width of fold back + seam allowance beyond seamline + 1/2" seam allowance on piped side.

It's always a good idea to cut it a little wider than you really need.